

Installation Instructions – Cantilever Style Awning

Congratulations on your purchase of an Unlimited Awnings product. You have purchased a quality product providing the quickest, trouble free setup in the industry! We ARE taking awnings to the next level.

Following are general guidelines for installing an awning. Please contact us at 612-816-9644 or info@unlimitedawnings.com with any questions and/or comments.

Please refer to your Approval and/or Installation drawing for specific details or your awning. Read entire installation guide before starting installation.

1. Carefully unpack your awning.
2. Inspect for shipping damage.
3. Review your approval/installation drawing for details of the trailer side mounting brackets. Fig. 1. Use silicone around all mounting holes drilled in trailer to prevent leakage.

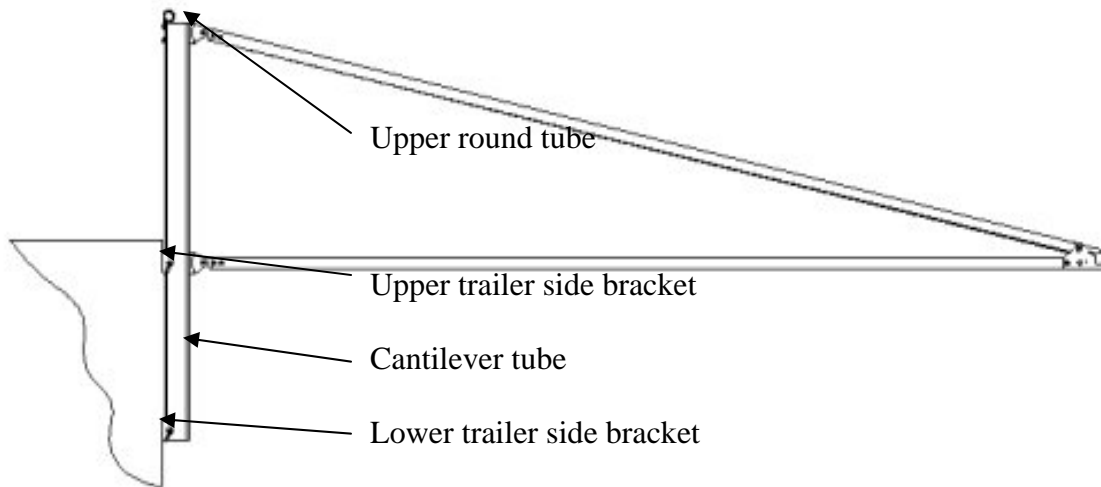


Figure 1 - Typical cantilever frame assembly as mounted to trailer

The QUICKEST, TROUBLE FREE Setup In The Industry

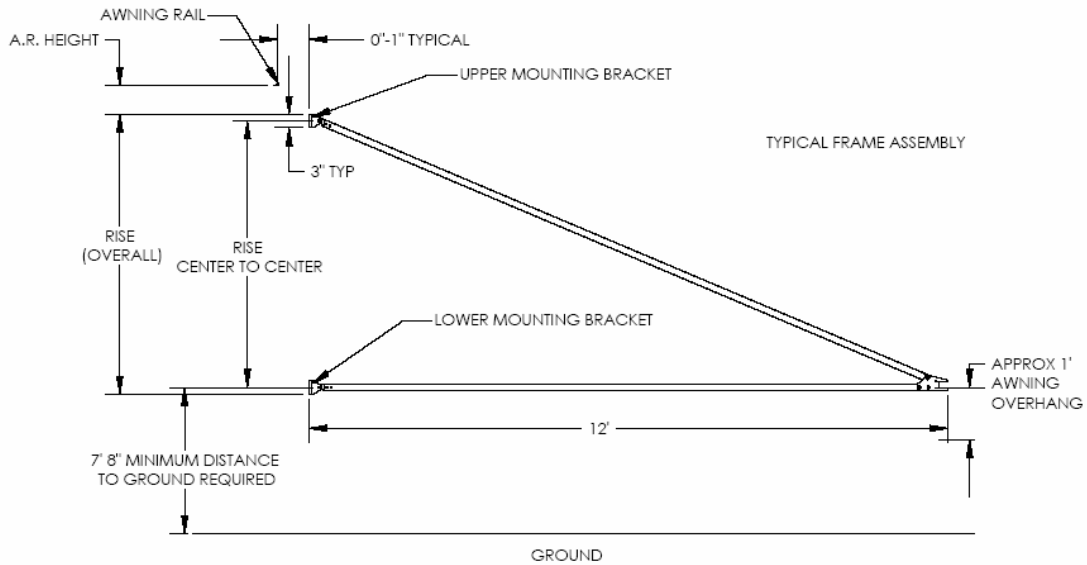


Figure 2 - Typical frame assembly (cantilever not shown, awning rail on cantilever style is mounted on top of the trailer)

4. Review your approval/installation drawing to determine the frame spacing (centerline to centerline and overall dimensions are provided) Fig. 3
5. Layout the centerlines of all the lower trailer side mounting brackets on the side of the trailer. These brackets should be located as shown on the approval/installation drawing and line up on studs (if applicable). Additional reinforcement may be required (customer responsibility).
6. Using brackets as a template, mark location of mounting holes to be drilled. Fig. 4 and mount brackets (see steps 8,9,10,11).
7. Using quick pin, install cantilever tube in lower trailer side bracket. Position the cantilever tube to be 7/16" away from trailer side and vertical. Locate the upper trailer side mounting bracket as high as possible on the side of the trailer and mount (see step 6). With the vertical tube 7/16" away from trailer side (make sure cantilever tube is vertical. It is more important the tube is vertical than it is 7/16" away) match drill (9/32") the cantilever tube with the upper trailer side bracket.

The QUICKEST, TROUBLE FREE Setup In The Industry

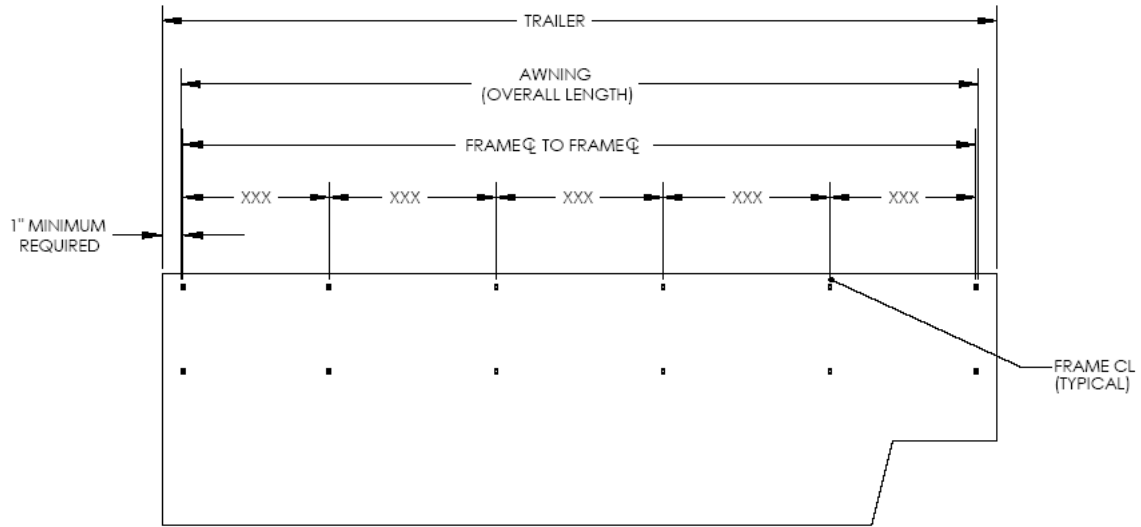


Figure 3 - Typical frame spacing (Actual number of frames may be different than shown)

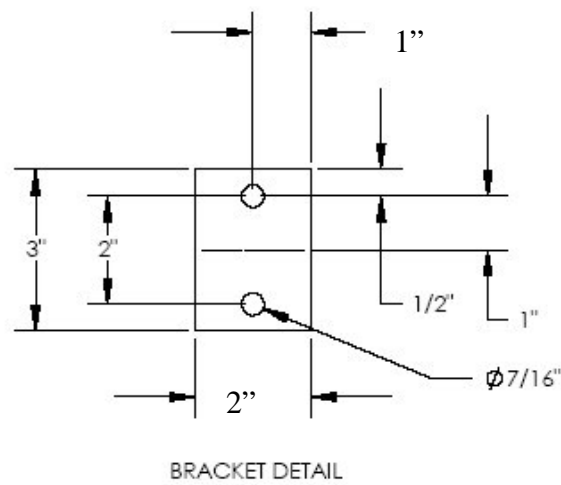


Figure 4 - Bracket detail

The QUICKEST, TROUBLE FREE Setup In The Industry



612-816-9644

8. After all bracket mounting locations have been marked, verify sufficient clearance between door (open/close) and frame assemblies.
9. Verify no interference exists between frame assemblies and any components on outside/inside of trailer.
10. Drill bracket mounting holes as previously marked.
11. Using 5/16" high strength (Grade 5 minimum, supplied by customer) fasteners, thread locker, mount the brackets onto trailer. Note the bolts should go from the outside of the trailer to the inside to ensure proper operation and not interfere with the Quick Connects (if applicable).
12. Review your installation drawing to determine awning rail location.
13. Mount awning rail every 12" using self tapping fasteners or bolts (#10 or larger) supplied by customer.
14. Insert stub plates (note there are left hand and right hand assemblies) into the 1.66" diameter round tubes. Set the assembly into the top of the corresponding cantilever tube frame space (Note the stub assemblies should bias the 1.66" diameter tube towards the center of the trailer). Continue until all assemblies are set in place on top of the cantilever tubes. Slide stub assemblies out of 1.66" diameter tubes until contact with the next stub assembly. Using self drilling/tapping fasteners (with thread locker), secure stub assemblies to 1.66" diameter tubes from below (2 places).

The QUICKEST, TROUBLE FREE Setup In The Industry