

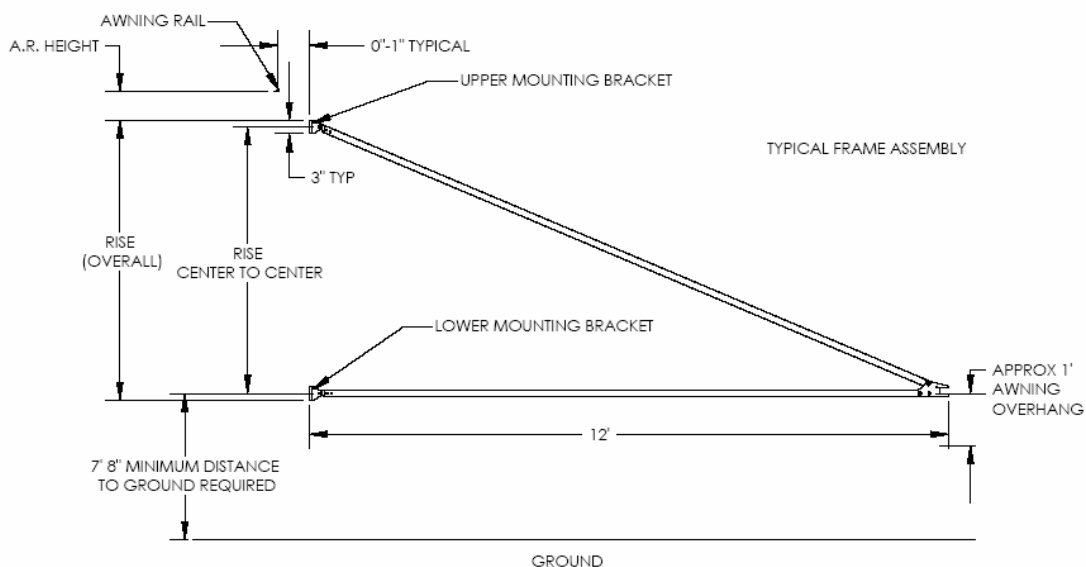
## Installation Instructions

Congratulations on your purchase of an Unlimited Awnings product. You have purchased a quality product providing the *quickest, trouble free setup* in the industry! We ARE taking awnings to the next level.

Following are general guidelines for installing an Unlimited Awnings awning onto your trailer. Please contact us at 612-816-9644 or [info@unlimitedawnings.com](mailto:info@unlimitedawnings.com) with any questions and/or comments.

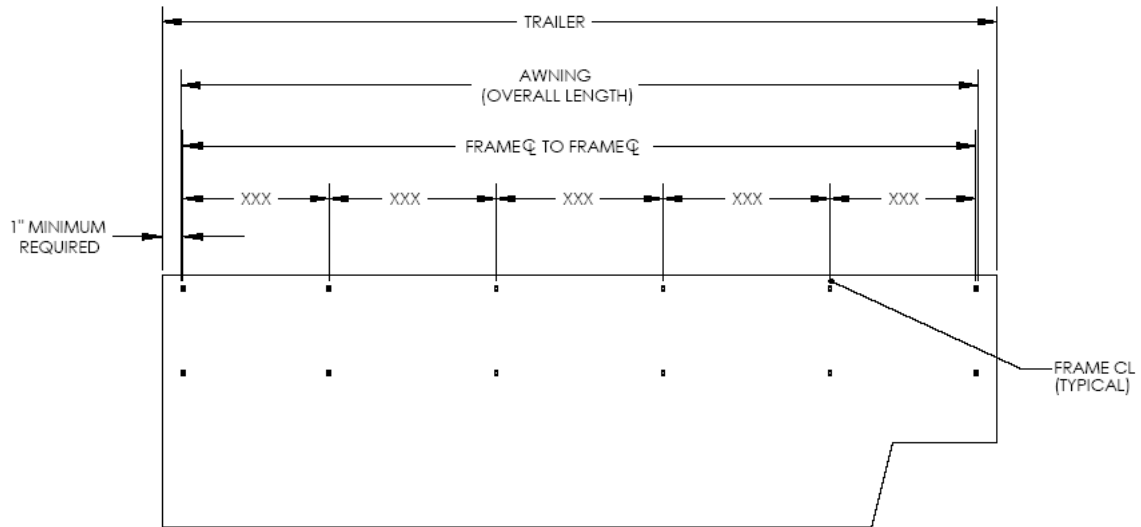
Please refer to your signed Approval and/or Installation drawing for specific details of your awning. Read this entire installation guide before starting installation.

1. Carefully unpack your awning.
2. Inspect for shipping damage. If damaged, contact freight company directly. Awnings are shipped FOB Mpls, MN unless otherwise noted.
3. Review your installation and/or approval drawing to determine the spacing (rise) between the upper and lower mounting brackets (both centerline to centerline and overall dimensions are provided) **Fig 1**.



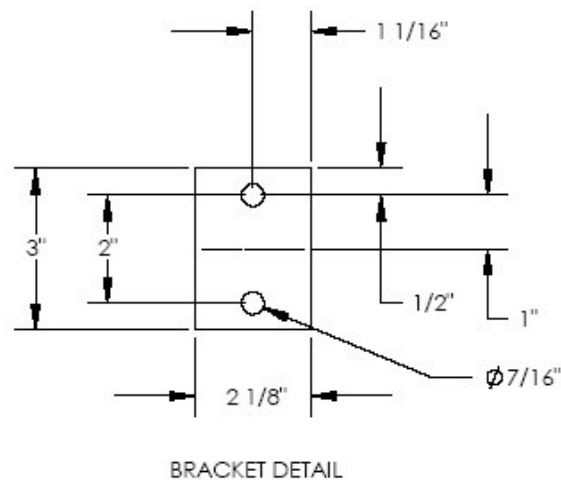
**Figure 1 - Typical frame assembly (Quick Connect style shown)**

- Review your signed Approval and/or Installation drawing to determine the frame spacing (centerline to centerline and overall dimensions are provided) **Fig. 2**



**Figure 2 - Typical frame spacing (Actual number of frames may vary)**

- Layout the centerlines of all brackets on the side of trailer. Brackets should line up on studs (if applicable). Additional reinforcement may be required (customer responsibility).
- Using brackets for a template (upper and lower holes, note that middle hole is not shown, but may be used. Refer to your sign Approval and/or Installation drawing for correct holes to use), mark location of mounting holes to be drilled. **Fig. 3**



**Figure 3 - Bracket detail**

7. After all bracket mounting locations have been marked, verify sufficient clearance between door (open/closed) and frame assemblies.
8. Verify no interference exists between frame assemblies and any components on outside or the inside (for mounting bolts) of trailer.
9. Verify lower mounting bracket centerline is at least 7' 6" above ground level (required for proper operation of Quick Connects bracket if applicable).
10. Review your signed Approval and/or Installation drawing for awning rail location.
11. Mount awning rail every 12" using self tapping fasteners or screws/bolts (#10 or larger supplied by customer). Clean trailer surface and apply silicone before mounting to prevent leakage.
12. Drill bracket mounting holes (7/16" diameter) as previously marked.
13. Using 5/16" high strength (Grade 5 minimum) fasteners with 5/16" washers and thread locker, mount the brackets onto the trailer. Note the bolt **MUST** go from the outside of the trailer to the inside to ensure proper Quick Connect operation. Bolt heads must not interfere with the Quick Connects on tube ends. Clean trailer surface and apply silicone before mounting to prevent leakage.
14. Tube storage brackets (if applicable) should be mounted on the studs. Measure all tube lengths to determine appropriate spacing between the brackets.